



Annual General Meeting

13 June 2018

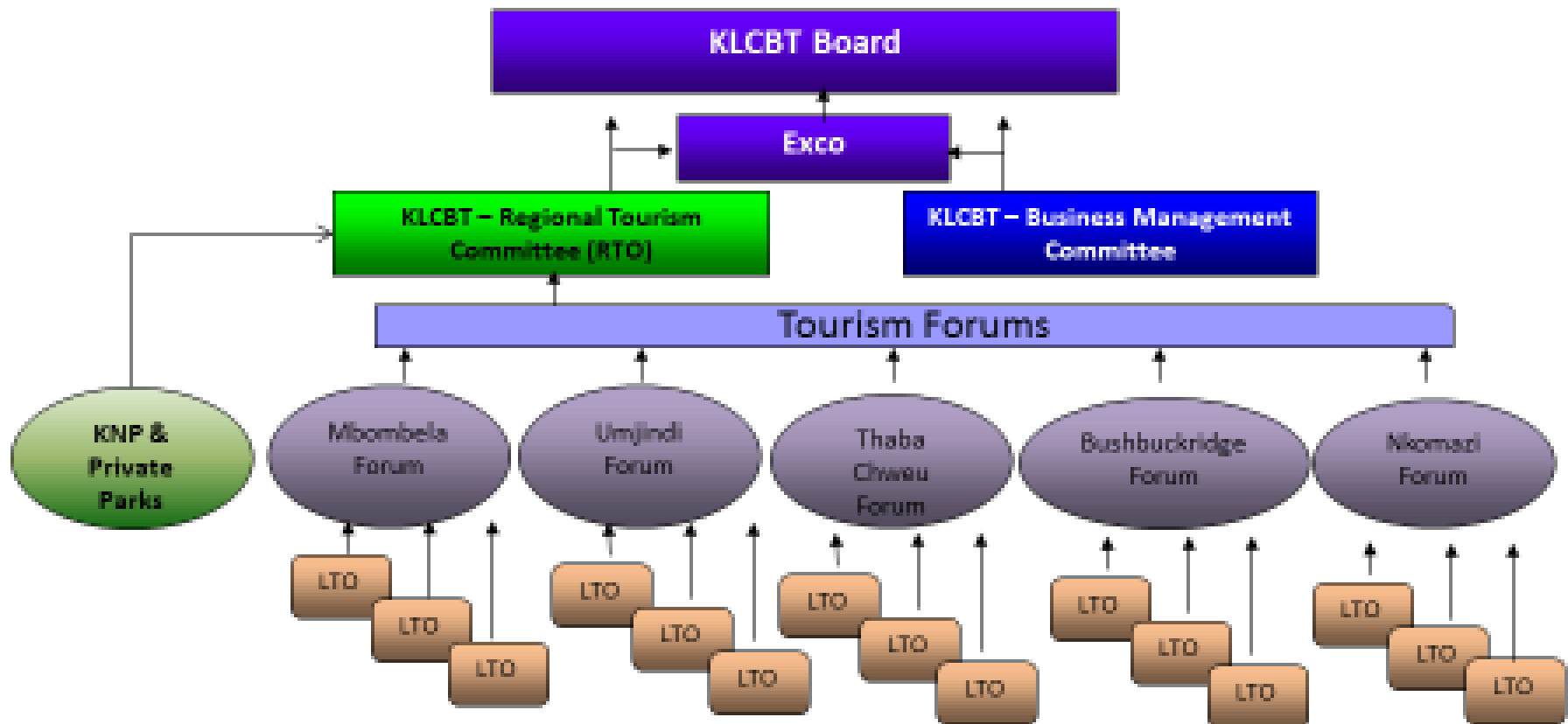
Bundu Lodge



KRUGER LOWVELD
EHLANZENI
it's in our nature

12h50 Explain next steps in
KLCBT elections

Organizational Structure



The Board – 15 Members

- 6 Executive Board Members:
 - Tourism Chairperson
 - 2 x Tourism Vice Chairpersons
 - Business Chamber Chairperson
 - 2 x Business Chamber Vice Chairpersons
- 8 Non Executive Board Members:
(not committee members)
 - 4 Nominated by the Tourism Committee
 - 4 Nominated by the Business Chamber Committee
- Immediate Past President:
 - Mr Oupa Pilane